

AUS15DQ Amber

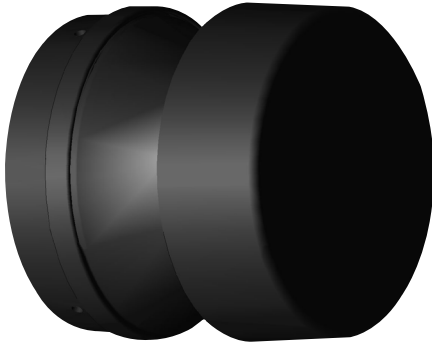
AmberLED Austin Wall/Deck Mount



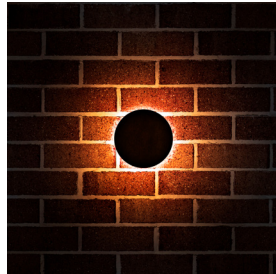
L70
25°C **147,000 Hours**



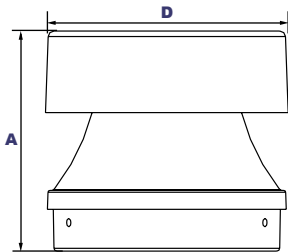
AUS15D
Shown with 180° Shield



AUS15D
Side View



AUS15D
Shown Mounted



Dimensions

Diameter (D)	4¾" (120mm)
Height (A)	4⅝" (117mm)

The 1882 Lighting's AmberLED AUS15D Deck/Wall mount luminaires provide full cutoff lighting for outdoor path, walkways and landscape areas using wide spread optics designed for wildlife, dark skies, or security applications requiring monochromatic AMBER light. LEDs operate between 585 and 595 nm, greater than 560nm required for wildlife protection. When mounted on walls between 8 to 20 feet the AUS15D fixture provides accent wall wash pattern illumination. These fixtures are ideal for landscaped areas at retail centers, restaurants, hotels, schools and universities, office buildings and medical facilities.

Specifications and Features:

Housing:

Die Cast Aluminum Housing with ½" NPS Coin Plug on Bottom, Sealed Driver Compartment. 360° Distribution, or 120° or 180° Shield.

Listing & Ratings:

ETL: Listed for Wet Locations, ANSI/UL 1598, 8750; IP66 Sealed LED Compartment.

Finish:

Textured Architectural Bronze or Black Powdercoat Finish Over a Chromate Conversion Coating. Custom Colors Available Upon Request.

Lens:

Clear UV-Stabilized Polycarbonate Vandal-Resistant Lens

Mounting Options:

Mount Over a 4" Recessed Outlet Box.

AmberLED:

Aluminum Boards

Wattage:

360° Arrays: 14w, System: 16.1w
180° & 120° Arrays: 14w, System: 16.1w

Driver:

Electronic Driver, 120-277V, 50/60Hz; Less Than 20% THD and PF>0.90. Standard Internal Surge Protection 2kV. 0-10V Dimming Standard for a Dimming Range of 100% to 10%; Dimming Source Current is 150 Microamps.

Warranty:

5-Year Warranty for -40°C to +50°C Environment.

See Page 2 for Projected Lumen Maintenance Table.

AmberLED



AUS15DQ Amber

AmberLED Austin Wall/Deck Mount

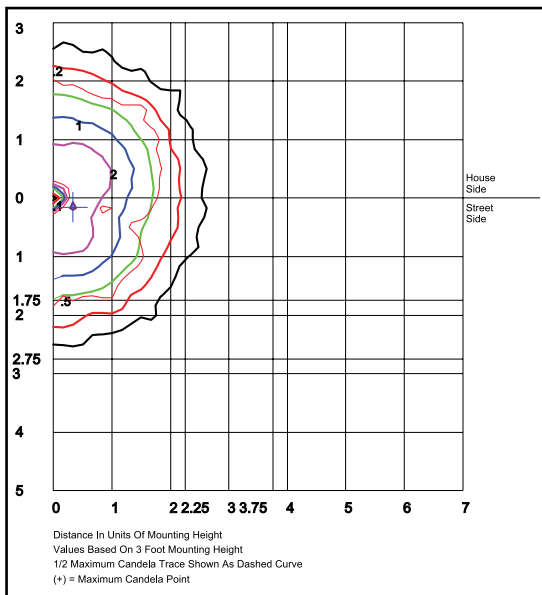


Order Information Example:

AUS15DOQF1X14UAMCZ

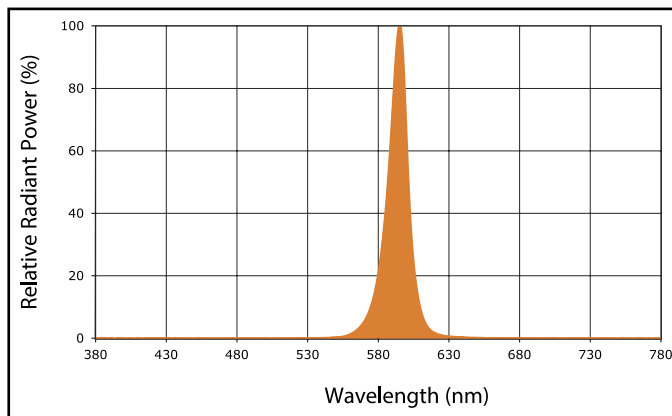
	U	AM	C	
Model	Driver	CCT	Lens	Color
AUS15DOQF1X14=Deck/Wall Mount - 360°, 14w AUS15DTQF1X14=Deck/Wall Mount with 120° Shield, 14w AUS15DHQF1X14=Deck/Wall Mount with 180° Shield, 14w	U=120-277V	AM=1400K	C=Clear UV-Stabilized Polycarbonate Vandal-Resistant Lens	Z=Bronze B=Black C=Custom (Consult Factory)

Photometric Data



AUS15DOQF1X14UAM
360° Open - Clear Glass Lens
Grid in feet, Mounting Height = 3 ft.

Spectral Chart



Photometric Performance

Wattage (Catalog Logic)		14W (1X14)
Input Watts		16.1W
Optic	CCT	Delivered Lumens
360° AUS15DO Models F=Type V Optic	Amber	192
	BUG Rating	B0-U1-G0

Wattage (Catalog Logic)		14W (1X14)
Input Watts		16.1W
Optic	CCT	Delivered Lumens
180° AUS15DH Models F=Type V Optic	Amber	136
	BUG Rating	B0-U1-G0

Projected Lumen Maintenance

Data shown for Amber LEDs		Compare to MH				
TM-21-11	Input Watts	Initial	25,000 Hrs	50,000 Hrs	100,000 Hrs	Calculated LED Life
L70 Lumen Maintenance @ 25°C / 77°F	All wattages up to and including 14w	1.00	0.95	0.90	0.80	147,000
L70 Lumen Maintenance @ 50°C / 122°F		1.00	0.89	0.78	0.55	67,000
L80 Lumen Maintenance @ 40°C / 104°F		1.00	0.92	0.85	0.70	66,000

NOTES:

1. Projected per IESNA TM-21-11. Data references the extrapolated performance projections for the base model in a 25°C ambient, based on 10,000 hours of LED testing per IESNA LM-80-08.
2. Compare to MH box indicates suggested Light Loss Factor (LLF) to be used when comparing to Metal Halide (MH) systems.